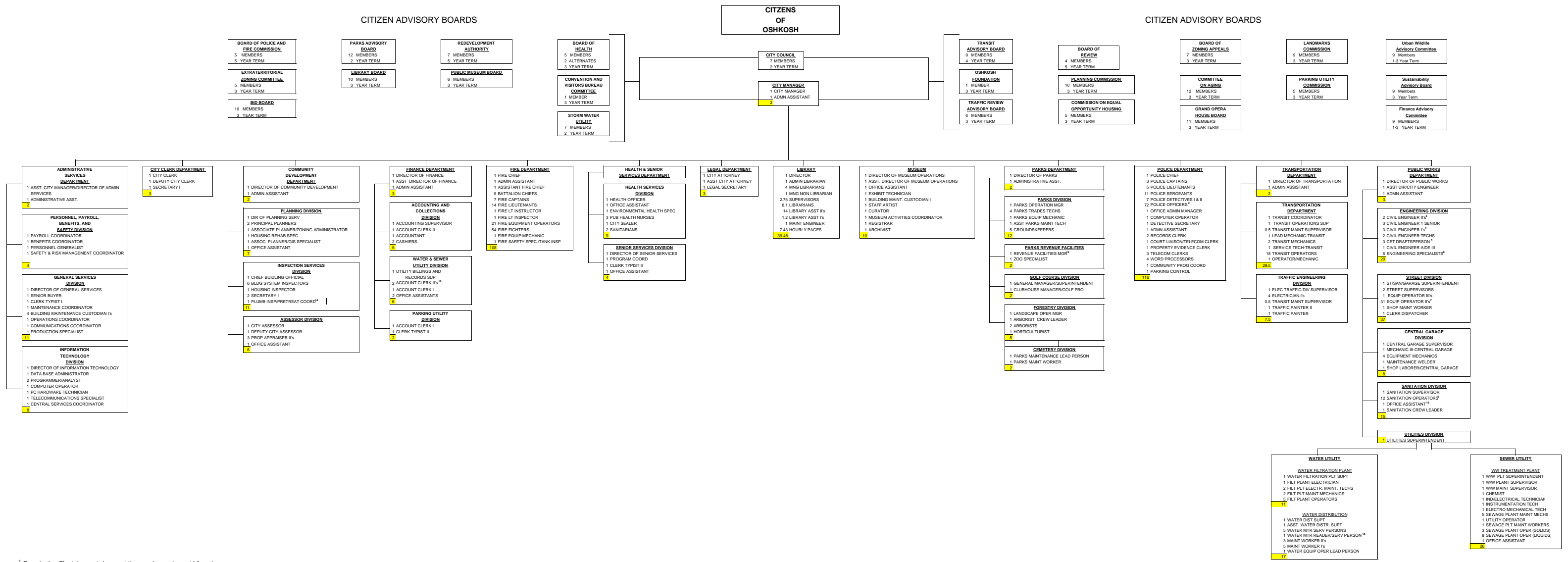


2011 CITY OF OSHKOSH TABLE OF ORGANIZATION



¹ Organization Chart does not show part-time employees (except Library)
² Police Officers; includes 5 Liaison Officers, 5 Police Specialist
³ Civil Engineer II; 1 charged to Storm Water Utility, 1 charged to Engineering
⁴ Civil Engineer I; .5 charged to Water Utility, .5 charged to Sewer Utility, 1 charged to Storm Water Utility
⁵ CET Draftsperson; 1 charged to Storm Water Utility, 2 charged to Engineering
⁶ Engineering Specialist; 4 charged to Engineering, 1 charged to Sewer Utility, 1 charged to Storm Water Utility
⁷ Equipment Operator; 25 charged to Streets, 3 charged to Storm Water Utility, 3 charged to Sewer Utility
⁸ Sanitation Operator; 9 charged to Sanitation, 3 charged to Recycling
⁹ Office Assistant; .5 charged to Sanitation, .5 charged to Recycling
¹⁰ Asst. Superintendent Streets & Sanitation; 5 charged to Sanitation, .5 charged to Recycling
¹¹ Revenue Facilities Manager; .5 charged to Parks Revenue Facility, .5 charged to Parks & other facilities
¹² Utilities Superintendent; 5 charged to Water Utility, .5 charged to Sewer Utility
¹³ Plumbing Insp/Pretreatment Coordinator; charged to Sewer Utility
¹⁴ Water Meter Reader/Service Person; .5 charged to Water Utility, .5 charged to Sewer Utility
¹⁵ Account Clerk II; .33 charged to Storm Water, .33 charged to Sewer Utility, .33 charged to Water Utility