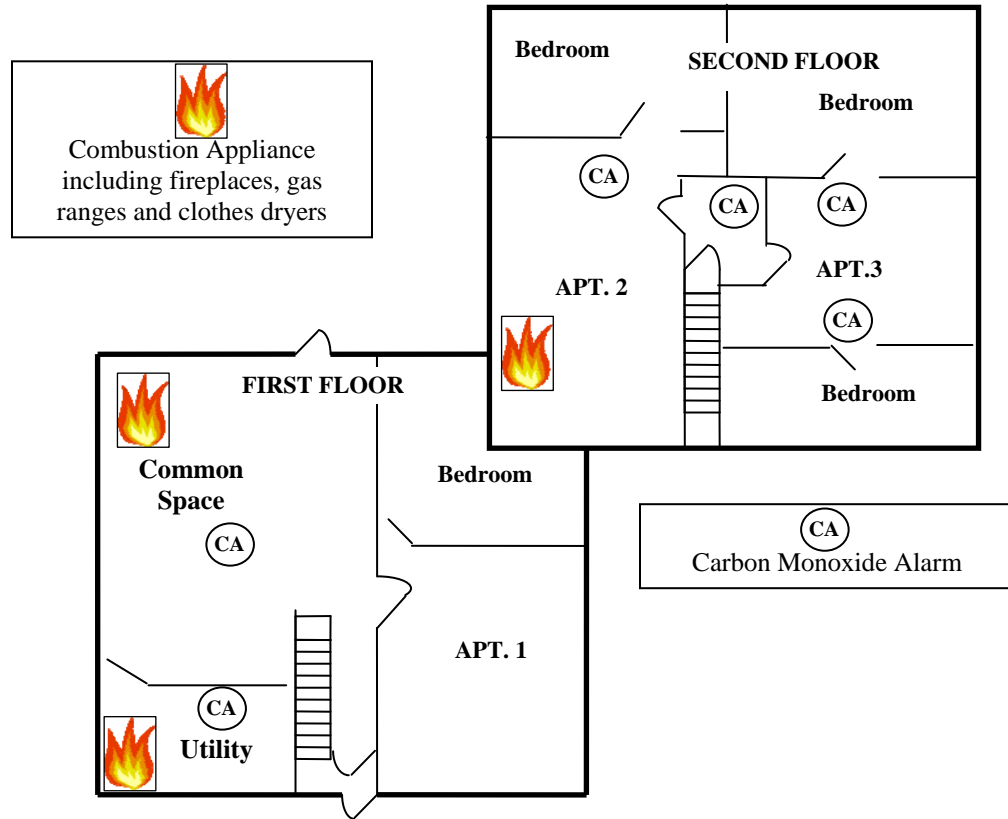


Minimum Carbon Monoxide Detector Locations

Multi-Unit Residential Buildings
Consult the code, s. Comm 62.1200
10/14/2010



Notes:

- In new construction since October 1, 2008, CO alarms shall be powered by building electrical system and include a battery backup; and multiple alarms within one living unit shall be interconnected. In pre-existing buildings, alarms may just be battery-powered and interconnection is not required.
- Utility room needs CO alarm within 75' of furnace. If alarm instructions require a minimum separation from the furnace greater than the room allows, then locate alarm outside the room.
- Common space needs CO alarm within 75' of fireplace.
- Apartment 1 does **not** need a CO alarm because it does not have a combustion appliance and it is not adjacent to a living unit with a combustion appliance
- Apartment 2 with a gas range needs a CO alarm within 15' of the bedroom.
- Apartment 3 needs CO alarms within 15' of **each** bedroom because it is adjacent to Apartment 2 that has a combustion appliance.